



Saturday Globe 1892-10-01

<https://search.adarchives.org/en/permalink/saturday-globe-1892-10-01>

Date: 1892-10-01
Description Level: Item
Collection/Fonds: AMBA Newspaper Collection
Language: English
Format: textual records
Copyright: Copyright status unknown. Responsibility for determining the copyright status and any use rests with the user.

Documents



Saturday Globe 1892-10-01

 [View PDF](#)



Arnprior Watchman 1892-11-26

<https://search.adarchives.org/en/permalink/arnprior-watchman-1892-11-26>

Date: 1892-11-26
Description Level: Item
Collection/Fonds: AMBA Newspaper Collection
Language: English
Format: textual records
Copyright: Copyright status unknown. Responsibility for determining the copyright status and any use rests with the user.

Documents



Arnprior Watchman 1892-11-26

 [View PDF](#)

THE MARBLE QUARRIES

The town is actually built on a marble bed, and in the immediate neighbourhood immense quantities are lying waiting for the drill and hammer of the quarrymen.

This is an industry that must become of great importance to the town now that increased facilities for getting it to the markets will be given by a competing line of railway. Its utility and superiority, both for building and ornamentation purposes, has been fully demonstrated by the fact that it has been used now for nearly 40 years. The pillars, lintels, sills and arches of Mr. H.F. McLachlin's residence, which was built nearly 40 years ago, and other buildings in the town that have been put up since, are all made of this marble and do not show any perceptible sign of wear or decay from the action of the weather. Considerable of this marble was used in the building of the Parliament buildings at Ottawa, and it is said by the engineers and experts that it is showing the least sign of decay of the many

varieties that are in that stately pile. In the past the effort to put this marble in the market has been very limited, and only the surface stone has been shipped, but a much finer and better quality can be had by going further down, and there is little doubt but what capital will be soon found new to fully develop it, as it will meet the requirements of the most exacting engineer for a solid, lasting stone, as well as an ornamental one.

Mr. J.G. Watson, the local marble cutter, has opened up a new quarry which is almost free from the light coloured streaks and flashes noticeable in some of the varieties; it is of a dark blue grey and interspersed with rich dark lines, which, when inspected closely, scarcely in miniature can be seen on the Madawaska marble. It is very easily worked and will take a very high polish.

Toronto Globe Marble Quarries

<https://search.adarchives.org/en/permalink/archivaldescr6100>

Format: photographic

Collection/Fonds: Peter Hessel collection

Description Level: Item

Scope and Content: Photocopy of Toronto Globe newspaper about marble quarries.

Accession No.: 1994-0021

Images

THE MARBLE QUARRIES

The town is actually built on a marble bed, and in the immediate neighbourhood immense quantities are lying waiting for the drill and hammer of the quarrymen.

This is an industry that must become of great importance to the town now that increased facilities for getting it to the markets will be given by a competing line of railway. Its utility and superiority, both for building and ornamentation purposes, has been fully demonstrated by the fact that it has been used now for nearly 40 years. The pillars, lintels, sills and arches of Mr. H.F. McLachlin's residence, which was built nearly 40 years ago, and other buildings in the town that have been put up since, are all made of this marble and do not show any perceptible sign of wear or decay from the action of the weather. Considerable of this marble was used in the building of the Parliament buildings at Ottawa, and it is said by the engineers and experts that it is showing the least sign of decay of the many

varieties that are in that stately pile. In the past the effort to put this marble in the market has been very limited, and only the surface stone has been shipped, but a much finer and better quality can be had by going further down, and there is little doubt but what capital will be soon found new to fully develop it, as it will meet the requirements of the most exacting engineer for a solid, lasting stone, as well as an ornamental one.

Mr. J.G. Watson, the local marble cutter, has opened up a new quarry which is almost free from the light coloured streaks and flashes noticeable in some of the varieties; it is of a dark blue grey and interspersed with rich dark lines, which, when inspected closely, scarcely in miniature can be seen on the Madawaska marble. It is very easily worked and will take a very high polish.



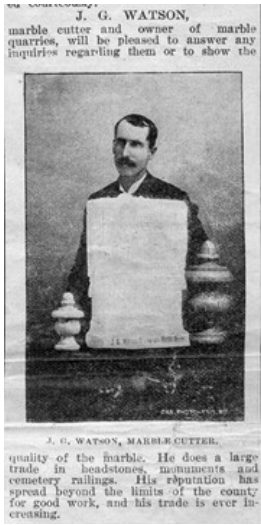
McLachlin Boom Camp 1892

<https://search.adarchives.org/en/permalink/archivaldescr6122>

Date: 1892
Format: photographic
Collection/Fonds: Ben Frieday fonds
Description Level: Item
Scope and Content: B&W photograph of a group of men at McLachlin Boom Camp.
Accession No.: 1995-0072

Images



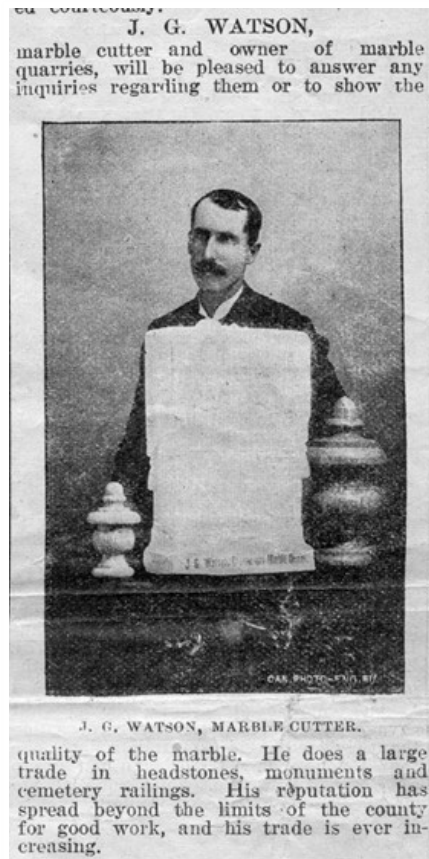


Toronto Globe J G Watson

<https://search.adarchives.org/en/permalink/archivaldesc6096>

Format: photographic
Collection/Fonds: Peter Hessel collection
Description Level: Item
Scope and Content: Photocopy of Toronto Globe newspaper about J G Watson, local marble cutter and quarry owner.
Accession No.: 1994-0021

Images





Arnprior, 31 F/8 East, Edition 4

<https://search.adarchives.org/en/permalink/archivaldescr264>

Date: 1959
Format: map
Collection/Fonds: Stewart Famco fonds
Description Level: Item
Reference No.: M012
Publication: Department of National Defence
Physical Description: paper - coloured
Size: 57 x 79
Material Details: Scale: 2 cm. = 1 km.
Physical Condition: bottom edge torn off
Scope and Content: showing area of Fitzroy Harbor to Dunrobin and Constance Bay to Blakeney
Accession No.: 1999-0107
Subject Access: Maps - Topographical
Geographic Access: Fitzroy
Torbolton
Pakenham



Perth 31C/16, Edition 2

<https://search.adarchives.org/en/permalink/archivaldescr287>

Date: 1969
Format: map
Collection/Fonds: Stewart Famco fonds
Description Level: Item
Reference No.: M035
Publication: Dept of Energy, Mines & Resources
Physical Description: print - coloured
Size: 91 x 64
Material Details: Scale: 1:50,000
Scope and Content: Area covers Smiths Falls, Perth, Rideau Lake.
Accession No.: 1999-0107
Subject Access: Maps - Topographical
Geographic Access: Lanark



Arnprior, Ontario-Québec 31 F/8 edition 7

<https://search.adarchives.org/en/permalink/archivaldescr262>

Date: 1978

Format: map

Collection/Fonds: Stewart Famco fonds

Description Level: Item

Reference No.: M010

Publication: Dept. of energy, mines and resources

Physical Description: paper - coloured

Material Details: Scale: 2 cm. = 1 km.

Scope and Content: Shows area from White Lake to Carp and from Arnprior to Blakeney

Accession No.: 1999-0107

Subject Access: Maps - Topographical

Geographic Access: McNab
Arnprior
Fitzroy
Pakenham



Arnprior, 31 F/8 West half, Edition 4

<https://search.adarchives.org/en/permalink/archivaldescr263>

Date: 1959
Format: map
Collection/Fonds: Stewart Famco fonds
Description Level: Item
Reference No.: M011
Publication: Department of National Defence
Physical Description: paper - coloured
Size: 57 x 73
Material Details: Scale: 2 cm. = 1 km.
Scope and Content: shows area White Lake, Arnprior, Pakenham.
Accession No.: 1999-0107
Subject Access: Maps - Topographical
Geographic Access: McNab
Pakenham
West Carleton



Westport, Ontario 31C/9, Edition 4

<https://search.adarchives.org/en/permalink/archivaldescr297>

Date: 1969

Format: map

Collection/Fonds: Stewart Famco fonds

Description Level: Item

Reference No.: M045

Publication: Dept of Energy, Mines & Resources

Physical Description: print - coloured
Size: 91 x 64

Material Details: Scale: 1:50,000

Scope and Content: Shows roads, railways, power lines, elevation, and waterways, including the Rideau Canal. Gives lots and concessions of townships around Westport, Delta and Lyndhurst.

Accession No.: 1999-0107

Subject Access: Maps - Topographical

Geographic Access: Leeds
Frontenac
Lanark



Special Occasion A

<https://search.adarchives.org/en/permalink/archivaldescr1360>

Date: 1925c
Format: photographic
Collection/Fonds: W.G. Davies fonds
Description Level: Item
Reference No.: P-94-047
P-94-116

Reproduction Binder 4B P0433

Location:

Scope and Content: One of two photographs on page of Davies family members in fancy clothes posing for pictures.

Accession No.: 1993-0017

Images





Special Occasion B

<https://search.adarchives.org/en/permalink/archivaldescr3559>

Date: 1925c
Format: photographic
Collection/Fonds: W.G. Davies fonds
Description Level: Item
Reference No.: P-94-047
P-94-116

Reproduction Binder 4B P0433

Location:

Scope and Content: One of two photographs on page of Davies family members in fancy clothes posing for pictures. Photograph on right taken in front of brick home (possibly beside 97 Madawaska).

Accession No.: 1993-0017

Images





Carleton Place 31 F/1, Edition 4

<https://search.adarchives.org/en/permalink/archivaldescr286>

Date: 1978
Format: map
Collection/Fonds: Stewart Famco fonds
Description Level: Item
Reference No.: M034
Publication: Dept of Energy, Mines & Resources
Physical Description: print - coloured
Size: 91 x 64
Material Details: Scale: 1:50,000
Scope and Content: Area covers Carleton Place, Almonte, Lanark, Mississippi Lake, Clayton Lake, Taylor Lake.
Accession No.: 1999-0107
Subject Access: Maps - Topographical
Geographic Access: Lanark



Denbeigh 31 F/3 West, Edition 1

<https://search.adarchives.org/en/permalink/archivaldescr291>

Date: 1951
Format: map
Collection/Fonds: Stewart Famco fonds
Description Level: Item
Reference No.: M039
Publication: Dept of National Defence, Army Survey Establishment
Physical Description: print - coloured
Size: 57 x 73
Material Details: Scale: 1:50,000
Scope and Content: Areas shows Denbeigh, Madawaska River, Weslemkoon Lake
Accession No.: 1999-0107
Subject Access: Maps - Topographical
Geographic Access: Lennox & Addington
Access: Renfrew



Denbeigh 31 F/3 East, Edition 1

<https://search.adarchives.org/en/permalink/archivaldescr292>

Date: 1951
Format: map
Collection/Fonds: Stewart Famco fonds
Description Level: Item
Reference No.: M040
Publication: Dept of National Defence, Army Survey Establishment
Physical Description: print - coloured
Size: 57 x 73
Material Details: Scale: 1:50,000
Scope and Content: Areas shows Griffith, Madawaska River in Renfrew County and portions of Lennox/Addington and Frontenac counties
Accession No.: 1999-0107
Subject Access: Maps - Topographical
Geographic Access: Renfrew
Frontenac
Lennox & Addington



Clyde, Ontario 31 F/2, Edition 2

<https://search.adarchives.org/en/permalink/archivaldesc295>

Date: 1974
Format: map
Collection/Fonds: Stewart Famco fonds
Description Level: Item
Reference No.: M043
Publication: Dept of Energy, Mines & Resources
Physical Description: print - coloured
Size: 32 x 15
Material Details: Scale: 1:50,000
Physical Condition: only bottom half
Scope and Content: Gives township lots and concessions and places around Flower Station, Lavant, and Ompah. Shows roads, railways, power lines, elevations, and waterways. (Bottom half of map only)
Accession No.: 1999-0107
Subject Access: Maps - Topographical
Geographic Access: Lanark
Frontenac



Renfrew County -- 31 F/7 West 2nd Edition

<https://search.adarchives.org/en/permalink/archivaldesc274>

Date: 1952
Format: map
Collection/Fonds: Stewart Famco fonds
Description Level: Item
Reference No.: M022
Publication: Department of National Defence
Physical Description: coloured print
Size: 39 x 55
Material Details: Scale: 1:50,000
Scope and Content: Shows power lines, railways, and waterways. The townships are primarily Admaston, Brougham, Grattan, and Blythfield
Accession No.: 1999-0107
Subject Access: Maps - Topographical
Geographic Access: Renfrew



Carleton Place 31 F/1 West, Edition 2

<https://search.adarchives.org/en/permalink/archivaldescr288>

Date: 1951
Format: map
Collection/Fonds: Stewart Famco fonds
Description Level: Item
Reference No.: M036
Publication: Dept of National Defence, Army Survey Establishment
Physical Description: print - coloured
Size: 57 x 78
Material Details: Scale: 1:50,000
Scope and Content: Area covers Lanark village, Clayton Lake, Taylor Lake.
Accession No.: 1999-0107
Subject Access: Maps - Topographical
Geographic Access: Lanark



Denbigh, Ontario, Energy & Mines 31 F/3, edition 2

<https://search.adarchives.org/en/permalink/archivaldescr145>

Date: 1973
Format: map
Collection/Fonds: Peter Hessel collection
Description Level: Item
Reference No.: M035
Publication: Energy, Mines & Resources
Physical Description: paper - coloured
Size: 79 x 56
Material Details: Scale: 1:50,000
Scope and Content: Shows the Madawaska River and Griffith in the north, Wickware Lake in the south, Little Mississippi River in the west, Black Donald Hills in the east. Centennial Lake.
Accession No.: 1994-0021
Subject Access: Maps - Topographical
Geographic Access: Lennox & Addington
Access: Renfrew
Pontiac



Clyde, Ontario 31 F/2, East Half, 1st Edition

<https://search.adarchives.org/en/permalink/archivaldescr293>

Date: 1951
Format: map
Collection/Fonds: Stewart Famco fonds
Description Level: Item
Reference No.: M041
Publication: Dept of National Defence, Army Survey Establishment
Physical Description: print - coloured
Size: 57 x 73
Material Details: Scale: 1:50,000
Scope and Content: Includes Bagot Long Lake down to Lavant Station and Wilbur. Includes Flower Station, Clyde Forks. Mainly Lanark County, a bit of Renfrew and Frontenac Counties
Accession No.: 1999-0107
Subject Access: Maps - Topographical
Geographic Access: Lanark